

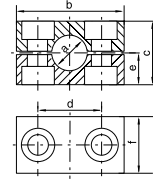
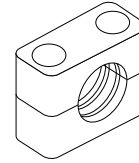
Tube clamps

Tube clamps series C (Heavy series) – Components

DIN 3015, part 2

Order code for clamp halves:

- Polypropylene – **STANDARD**
- Inside smooth – **GLAD**
- Polyamide 6 – **PA**
- Rubber – **RUB**
- Aluminium – **ALU**



clamp size	Tube O.D. mm	Tube NB	Tube O.D.	Order code	1 part 2 clamp halves dimensions:				
					b	c	d	e	f
1	6.0	G 1/8	5/16	390099	55	32	33	16	30
	8.0			390100					
	10.0			390101					
	12.0			390102					
	12.7			390168					
	13.5	G 1/4	1/2	390103					
	14.0			390104					
	15.0			390105					
	16.0			390106					
	17.2			G 3/8					
18.0	390108								
2	19.0	G 1/2	3/4	390167	70	48	45	24	30
	20.0			390109					
	21.3			390110					
	22.0			390111					
	23.0			390112					
	25.0	G 3/4	1	390113					
	26.9			390114					
	28.0			390115					
	30.0			390116-2					
3	30.0	G 1	1 1/4	390116	85	60	60	30	30
	32.0			390117					
	33.7			390118					
	35.0			390119					
	38.0	G 1 1/4	1 1/2	390120					
	40.0			390121					
	42.0			390122					
4	38.0	G 1 1/4	1 1/2	390123	115	90	90	45	45
	40.0			390124					
	42.0			390125					
	45.0	G 1 1/2	2	390126					
	48.3			390127					
	50.0			390128					
	51.0	G 2	2 1/4	390129					
	52.0			390130					
	55.0			390131					
	57.0	2 1/2	2 1/2	390132					
	60.3			390133					
	63.0			390134					
	65.0			390135					
	70.0			390136					

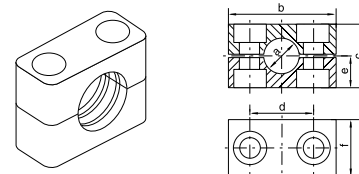
Continued on next page...

Tube clamps series C (Heavy series) – Components (Continued)

DIN 3015, part 2

Order code for clamp halves:

- Polypropylene – **STANDARD**
- Inside smooth – **GLAD**
- Polyamide 6 – **PA**
- Rubber – **RUB**
- Aluminium – **ALU**



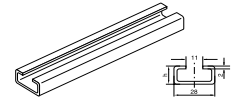
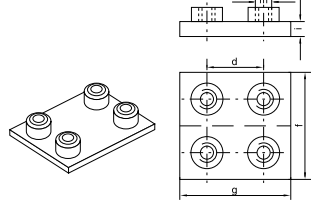
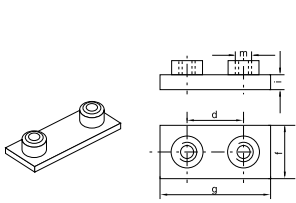
clamp size	Tube O.D. mm	Tube NB	Tube O.D.	Order code	1 part 2 clamp halves					
					dimensions:					
					b	c	d	e	f	
5	70.0	G 2 1/2	3	390137	152	120	122	60	60	
	73.0			390166						
	75.0			390165						
	76.1			390138						
	80.0			390164						
	82.5	G 3	3 1/4	390139						
	88.9		3 1/2	390140						
	90.0		390141-5							
6	90.0	G 3 1/2	4	390141	205	170	168	85	80	
	97.0			390163						
	100.0			390162						
	101.6	G 4	4 1/4	390142						
	108.0			390143						
	114.3			4 1/2						390144
	127.0			5						390145
7	127.0	G 5	5	390147	250	200	205	100	90	
	133.0		5 1/4	390148						
	140.0		5 1/2	390149						
	150.0	G 5 1/2	6	390160						
	152.4			390150						
	159.0			6 1/4						390151
	165.1			6 1/2						390152
	168.3			6 5/8						390153
8	168.3	G 8	6 5/8	390154	320	270	265	135	120	
	177.8		7	390155						
	193.7		7 5/8	390156						
	203.0		390159							
	219.1		390157							
	220.0		390158							

Order code suffixes				
	Smooth	Polyamide	Rubber	Aluminium
Suffix	GLAD	PA	RUB	ALU
Example	390106GLAD	390106PA	390106RUB	390106ALU

Tube clamps

Tube clamps series C (Heavy series) – Components

DIN 3015, part 2

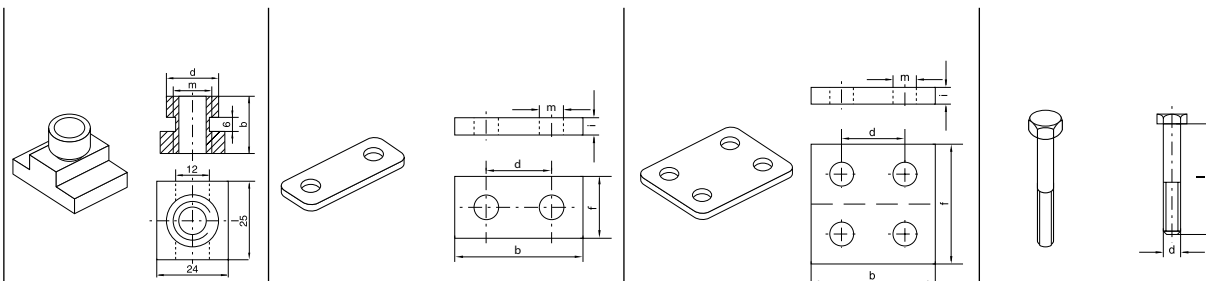


Clamp size	Order code	weld plate dimensions:					Order code	double weld plate dimensions:					Order code	mounting rail dimensions:	
		d	f	g	i	m		d	f	g	i	m		b	h
1	390973	33	30	73	8	M10	390965	33	60	73	8	M10	390201	40	22
2	390972	45	30	85	8	M10	390964	45	60	85	8	M10			
3	390971	60	30	100	8	M10	390963	60	60	100	8	M10			
4	390970	90	45	140	10	M12	390962	90	90	140	10	M12			
5	390969	122	60	180	10	M16	390961	122	120	180	10	M16			
6	390968	168	80	225	15	M20	390960	168	160	225	15	M20			
7	390967	205	90	270	15	M24	390959	205	180	270	15	M24			
8	390966	265	120	340	25	M30	390958	265	240	340	25	M30			

All metal parts available in stainless steel, please add suffix **RVS** after partnumber if stainless steel is required.

Tube clamps series C (Heavy series) – Components

DIN 3015, part 2



clamp size	rail nut			cover plate					double cover plate					hexagon head				
	Order code	dimensions:			Order code	dimensions:					Order code	dimensions:					Order code	dimensions:
		b	d	m		b	d	f	i	m		b	d	f	i	m		d × L
1	390907	20	17.8	M10	390946	55	33	30	8	11	390938	55	33	60	8	11	090141	M 10×40
2					390945	70	45	30	8	11	390937	70	45	60	8	11	090151	M 10×60
3					390944	85	60	30	8	11	390936	85	60	60	8	11	090161	M 10×70
4	390908	23	19.8	M12	390943	115	90	45	10	14	390935	115	90	90	10	14	090401	M 12×100
5					390942	152	122	60	10	18	390934	152	122	120	10	18	090181	M 16×130
6					390941	205	168	80	15	22	390933	205	168	160	15	22	090191	M 20×190
7					390940	250	205	90	15	26	390932	250	205	180	15	26	090201	M 24×220
8					390939	320	265	120	25	33	390931	320	265	240	25	33	090211	M 30×300

All metal parts available in stainless steel, please add suffix **RVS** after partnumber if stainless steel is required.

Flanges

Tubes

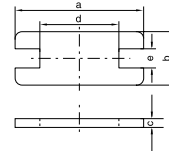
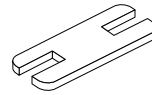
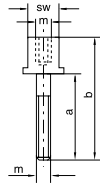
Tube clamps

Valves

Tube clamps

Tube clamps series C (Heavy series) – Components

DIN 3015, part 2



clamp size	stacking dimensions:					locking plate ¹⁾ dimensions:					
	Ordercode	a	b	m	SW	Ordercode	a	b	c	d	e
1	090510	25	51	M10	15	390510	55	30	8	14	15.5
2	090520	40	66	M10	15	390520	70	30	8	26	15.5
3	090530	50	76	M10	15	390530	85	30	8	41	15.5
4	090540	85	112	M12	17	390540	115	45	10	69	17.5
5	090550	110	146	M16	21	390550	152	60	10	97	21.5
6	090560	155	206	M20	27	390560	205	80	15	137	27.5
7	090570	185	245	M24	30	390570	250	90	15	169	30.5
8	090580	250	330	M30	36	390580	320	120	25	219	36.5

¹⁾ The use of stacking screws necessitates the use of locking plates in the construction assembly!

²⁾ When assembling solid rubber clamps, covering plates, hexagon screws and locking washers must be used.

All metal parts available in stainless steel, please add suffix **RVS** after partnumber if stainless steel is required.