

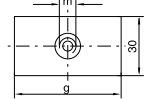
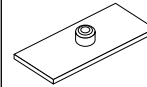
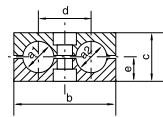
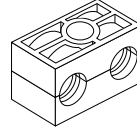
Tube clamps

Tube clamps series B (Twin-tube clamps) – Components

DIN 3015, part 3

Order code for clamp halves:

- Polypropylene – **STANDARD**
- Inside smooth – **GLAD**
- Polyamide 6 – **PA**
- Rubber – **RUB**



Width: 30 mm

clamp size	Tube O.D. mm	Tube NB	Tube O.D.	1 part 2 clamp halves ¹⁾					weld plate		
				Order code	dimensions:				Order code	dimensions:	
					b	c	d	e		g	m
1	6.0	G 1/8	1/4 5/16 3/8	390200 390235 390201 390237 390202 390203	36	27	20	13.5	390957	37	M6
	6.4										
	8.0										
	9.5										
	10.0										
	12.0										
2	12.7	G 1/4	1/2	390238 390225 390204 390205 390206 390226 390207	53	26	29	13	390956	55	M8
	13.5										
	14.0										
	15.0										
	16.0										
	17.2										
3	18.0	G 1/2	3/4	390219 390208 390227 390209 390210	67	37	36	18.5	390955	70	M8
	19.0										
	20.0										
	21.3										
4	22.0	G 3/4	1	390228 390211 390212	82	42	45	21	390954	85	M8
	25.0										
	26.9										
5	28.0	G 1	1 1/4	390218 390220 390213 390214 390215	106	54	56	27	390953	110	M8
	30.0										
	32.0										
	33.7										
	35.0										
5	38.0	G 1 1/4	1 1/2								
	42.0										

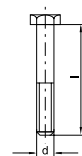
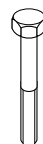
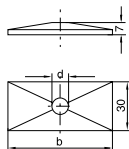
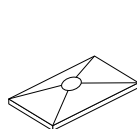
All metal parts available in stainless steel, please add suffix **RVS** after partnumber if stainless steel is required.

¹⁾ Twin-tube clamps with different outer tube diameters upon request.

Order code suffixes			
	Smooth	Polyamide	Rubber
Suffix	GLAD	PA	RUB
Example	390206LAD	390206PA	390206RUB

Tube clamps series B (Twin-tube clamps) – Components

DIN 3015, part 3



DIN 931/933

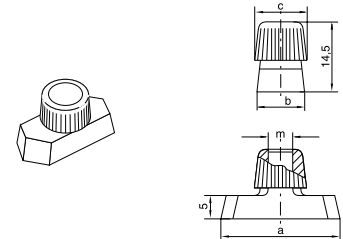
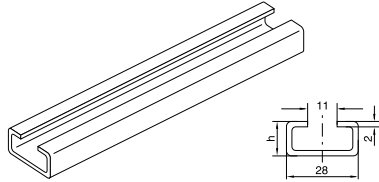
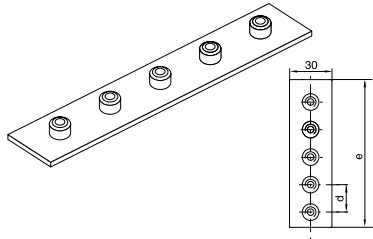
clamp size	cover plate		hexagonal head	
	Order code	dimensions: b d	Order code	dimensions: d × L
1	390930	34 6.6	090101	M 06×35
2	390929	51 8.6	090231	M 08×35
3	390928	64 8.6	090241	M 08×45
4	390927	78 8.6	090251	M 08×50
5	390926	102 8.6	090261	M 08×60

All metal parts available in stainless steel, please add suffix **RVS** after partnumber if stainless steel is required.

Tube clamps

Tube clamps series B (Twin-tube clamps) – Components

DIN 3015, part 3

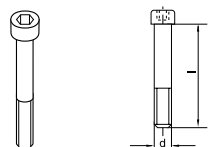


2 mtr

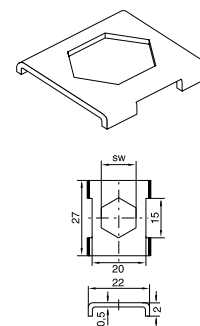
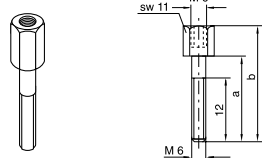
clamp size	weld plate, angled		mounting rail		rail nut				
	Order code	dimensions: d e Thickness:	Order code	dimensions: h	Order code	a	b	c m	
1	3909801 (5 clamps)	40 196 Thickness: 3 mm	390914 390913	14 30	390904	25.4	10.4	12 M6	
2	3909792 (5 clamps)	58 288 Thickness: 5 mm			390906	25.4	10.4	12 M8	
3	3909773 (5 clamps)	72 358 Thickness: 5 mm							
4	3909754 (5 clamps)	90 446 Thickness: 5 mm							
5	3909745 (5 clamps)	112 558 Thickness: 5 mm							

Tube clamps series B (Twin-tube clamps) – Components

DIN 3015, part 3



DIN 912



clamp size	socket head		Order code	stacking				locking plate ¹⁾	
	Order code	dimensions: d × L		a	b	m	SW	Order code	dim.: SW
1	089271	M 06×35	090270	20	34	M6	11	390919	11
2	089261	M 08×35	090330	20	33	M8	12	390918	12
3	089251	M 08×45	090340	29	44	M8	12		
4	089241	M 08×50	090350	34	49	M8	12		
5	089231	M 08×60	090360	47	62	M8	12		

¹⁾ The use of stacking screws necessitates the use of locking plates in the construction assembly!

²⁾ When assembling solid rubber clamps, covering plates, hexagon screws and locking washers must be used. All metal parts available in stainless steel, please add suffix **RVS** after partnumber if stainless steel is required.