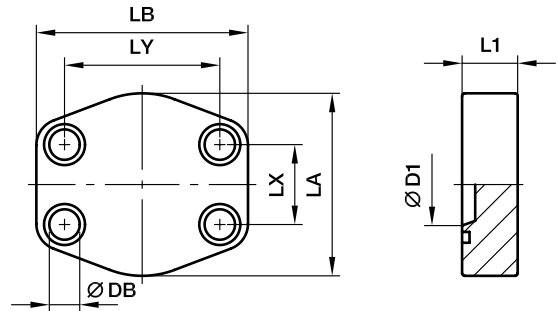


Flanges

5146 / 5147 - SAE Closed flange

SAE Closed flange
(ISO 6162-1/-2)



3000 PSI Series

Nom. flange size		D1	L1	LA	LB	LX	LY	DB	Weight (steel) kg/piece	Order code*	PN (bar)	
SAE (in.)	ISO (DN)										S	SS
1/2	13	13	16	46	58	17.5	38.1	9.0	0.30	5146-08	345	345
3/4	19	15	18	49	66	22.3	47.6	10.5	0.37	5146-12	345	345
1	25	18	19	53	71	26.2	52.4	10.5	0.54	5146-16	345	345
1 1/4	32	23	21	69	80	30.2	58.7	10.5	0.90	5146-20	276	276
1 1/2	38	28	24	77	95	35.7	69.9	13.5	1.03	5146-24	207	207
2	51	45	24	89	103	42.9	77.8	13.5	1.30	5146-32	207	207
2 1/2	64	58	25	101	116	50.8	88.9	13.5	1.45	5146-40	172	172
3	76	70	25	124	136	61.9	106.4	17.0	2.72	5146-48	138	138
3 1/2	89	85	25	136	152	69.9	120.7	17.0	2.90	5146-56	34	34
4	102	95	25	146	162	77.8	130.2	17.0	3.85	5146-64	34	34
5	127	110	25	180	184	92.1	152.4	17.0	4.20	5146-80	34	34

6000 PSI Series

1/2	13	13	16	46	58	18.2	40.5	9.0	0.30	5147-08	420	420
3/4	19	15	19	53	71	23.8	50.8	10.5	0.44	5147-12	420	420
1	25	22	24	66	80	27.8	57.2	13.5	0.73	5147-16	420	420
1 1/4	32	30	27	77	94	31.8	66.6	15.0	0.85	5147-20	420	420
1 1/2	38	35	30	89	103	36.5	79.3	17.0	1.61	5147-24	420	420
2	51	48	35	123	135	44.5	96.8	21.0	3.31	5147-32	420	420
2 1/2	64	55	45	150	166	58.7	123.8	25.0	4.50	5147-40	420	420
3	76	65	55	178	208	71.4	152.4	32.0	5.30	5147-48	420	420

*Please add suffix **RVS** after partnumber if stainless steel is required.