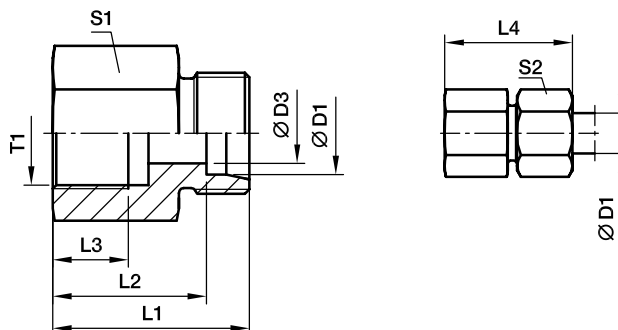


GAI-M - Female connector

Female metric thread (ISO 9974-1) / EO 24° cone end



| Series | Ø D1 | T1 | D3 | L1 | L2 | L3 | L4 | S1 | S2 | Weight g/1 piece | Order code | PN (bar) | |
|--------|------|----------|----|------|------|------|----|----|----|------------------|------------|----------|-----|
| | | | | | | | | | | | | CF | 71 |
| L | 06 | M 10×1.0 | 4 | 26.5 | 19.5 | 8.0 | 34 | 14 | 14 | 18 | GAI06LM | 315 | 315 |
| | 08 | M 12×1.5 | 6 | 31.0 | 24.0 | 12.0 | 39 | 17 | 17 | 32 | GAI08LM | 315 | 315 |
| | 10 | M 14×1.5 | 8 | 32.0 | 25.0 | 12.0 | 40 | 19 | 19 | 39 | GAI10LM | 315 | 315 |
| | 12 | M 16×1.5 | 10 | 33.0 | 26.0 | 12.0 | 41 | 22 | 22 | 52 | GAI12LM | 315 | 315 |
| | 15 | M 18×1.5 | 12 | 35.0 | 28.0 | 12.0 | 43 | 24 | 27 | 68 | GAI15LM | 315 | 315 |
| | 18 | M 22×1.5 | 15 | 37.0 | 29.5 | 14.0 | 46 | 30 | 32 | 111 | GAI18LM | 315 | 315 |
| | 22 | M 26×1.5 | 19 | 42.0 | 34.5 | 16.0 | 51 | 32 | 36 | 123 | GAI22LM | 160 | 160 |
| | 28 | M 33×2.0 | 24 | 45.0 | 37.5 | 18.0 | 54 | 41 | 41 | 211 | GAI28LM | 160 | 160 |
| | 35 | M 42×2.0 | 30 | 51.0 | 40.5 | 20.0 | 62 | 55 | 50 | 459 | GAI35LM | 160 | 160 |
| | 42 | M 48×2.0 | 36 | 53.0 | 42.0 | 22.0 | 65 | 60 | 60 | 522 | GAI42LM | 160 | 160 |
| S | 06 | M 12×1.5 | 4 | 33.0 | 26.0 | 12.0 | 41 | 17 | 17 | 35 | GAI06SM | 400 | 400 |
| | 08 | M 14×1.5 | 5 | 33.0 | 26.0 | 12.0 | 41 | 17 | 19 | 42 | GAI08SM | 400 | 400 |
| | 10 | M 16×1.5 | 7 | 34.0 | 26.5 | 12.0 | 43 | 22 | 22 | 58 | GAI10SM | 400 | 400 |
| | 12 | M 18×1.5 | 8 | 35.0 | 27.5 | 12.0 | 44 | 24 | 24 | 70 | GAI12SM | 400 | 400 |
| | 14 | M 20×1.5 | 10 | 39.0 | 31.0 | 14.0 | 49 | 27 | 27 | 95 | GAI14SM | 400 | 400 |
| | 16 | M 22×1.5 | 12 | 39.0 | 30.5 | 14.0 | 49 | 30 | 30 | 114 | GAI16SM | 400 | 400 |
| | 20 | M 27×2.0 | 16 | 45.0 | 34.5 | 16.0 | 56 | 36 | 36 | 189 | GAI20SM | 315 | 315 |
| | 25 | M 33×2.0 | 20 | 49.0 | 37.0 | 18.0 | 61 | 41 | 46 | 235 | GAI25SM | 315 | 315 |
| | 30 | M 42×2.0 | 25 | 55.0 | 41.5 | 20.0 | 68 | 55 | 50 | 490 | GAI30SM | 315 | 315 |
| | 38 | M 48×2.0 | 32 | 59.0 | 43.0 | 22.0 | 74 | 60 | 60 | 597 | GAI38SM | 250 | 250 |

| Order code suffixes | | | |
|---------------------|-----------------|--|-----------|
| | Stainless Steel | | Body Only |
| Suffix | 71 | | X |
| Example | GAI12LM71 | | GAI12LMX |