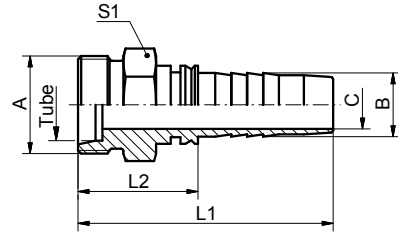
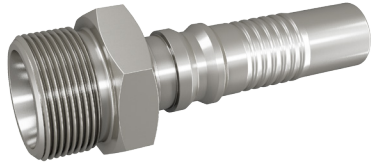


Crimp Fittings INTERLOCK type Stainless

CES, cone 24° for cutting ring connection, heavy duty series



DN	Tube	A	B / mm	C / mm	L1 / mm	L2 / mm	S1	Partnumber
20	25	M36x2,0	19,7	14,0	100,0	53,0	41	30281-36-12RVS
25	30	M42x2,0	26,0	18,0	115,0	59,0	46	30281-42-16RVS
32	38	M52x2,0	32,2	24,0	132,5	44,5	55	30281-52-20RVS

Material : 1.4571. Other materials on request