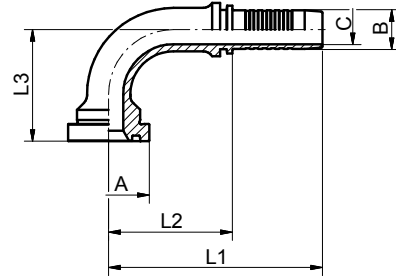


SFL 90°, flange connection 3000 PSI, light duty series



DN	A	B / mm	C / mm	L1 / mm	L2 / mm	L3 / mm	Partnumber
12	1/2-30,2	12,8	9,5	77,0	41,7	41,5	10917-08-08RVS
16	3/4-38,1	16,0	12,6	100,5	62,0	56,0	10917-12-10RVS
16	1-44,5	16,0	12,6	87,0	48,7	59,0	10917-16-10RVS
20	3/4-38,1	19,1	14,8	99,0	53,2	57,0	10917-12-12RVS
20	1-44,5	19,1	14,8	127,0	81,0	70,0	10917-16-12RVS
25	1-44,5	25,9	20,0	130,0	75,0	66,0	10917-16-16RVS
32	1 1/4-50,8	32,5	26,0	150,0	90,2	84,0	10917-20-20RVS
40	1 1/2-60,3	38,9	31,0	179,0	111,5	105,0	10917-24-24RVS
50	2-71,4	51,6	40,0	200,0	125,0	138,0	10917-32-32RVS

Material : 1.4571. Other materials on request