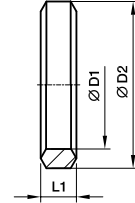


## DKAZ - Sealing ring

for low pressure banjos DSVW



For DSVW		Metric thread parallel	D1	D2	L1	Weight g/1 piece	Order code Steel CF
06LM		<b>M 10×1.0</b>	10.1	14	3.2	2	<b>DKAZ10</b>
08LM	06SM	<b>M 12×1.5</b>	12.1	17	4.2	3	<b>DKAZ12</b>
10LM	08SM	<b>M 14×1.5</b>	14.1	19	4.5	4	<b>DKAZ14</b>
12LM	10SM	<b>M 16×1.5</b>	16.1	21	4.5	4	<b>DKAZ16</b>
15LM	12SM	<b>M 18×1.5</b>	18.1	23	4.5	5	<b>DKAZ18</b>
	14SM	<b>M 20×1.5</b>	20.1	25	4.5	5	<b>DKAZ20</b>
18LM	16SM	<b>M 22×1.5</b>	22.1	27	4.5	6	<b>DKAZ22</b>
22LM		<b>M 26×1.5</b>	26.1	31	4.5	7	<b>DKAZ26</b>
	20SM	<b>M 27×2.0</b>	27.1	32	5.0	8	<b>DKAZ27</b>
28LM	25SM	<b>M 33×2.0</b>	33.1	39	6.0	15	<b>DKAZ33</b>
35LM	30SM	<b>M 42×2.0</b>	42.1	49	6.5	22	<b>DKAZ11/4</b>
42LM	38SM	<b>M 48×2.0</b>	48.1	55	6.5	25	<b>DKAZ11/2</b>

For DSVW		BSPP thread parallel	D1	D2	L1	Weight g/1 piece	Order code Steel CF
06LR		<b>G 1/8 A</b>	9.8	14	3.2	2	<b>DKAZ1/8</b>
08LR/10LR	06SR/08SR	<b>G 1/4 A</b>	13.3	18	4.5	4	<b>DKAZ1/4</b>
12LR	10SR/12SR	<b>G 3/8 A</b>	16.8	22	4.5	5	<b>DKAZ3/8</b>
15LR/18LR	14SR/16SR	<b>G 1/2 A</b>	21.1	26	5.0	6	<b>DKAZ1/2</b>
22LR	20SR	<b>G 3/4 A</b>	26.6	32	5.0	11	<b>DKAZ3/4</b>
28LR	25SR	<b>G 1 A</b>	33.4	39	6.0	14	<b>DKAZ1</b>
35LR	30SR	<b>G 1 1/4 A</b>	42.1	49	6.5	22	<b>DKAZ11/4</b>
42LR	38SR	<b>G 1 1/2 A</b>	48.1	55	6.5	25	<b>DKAZ11/2</b>