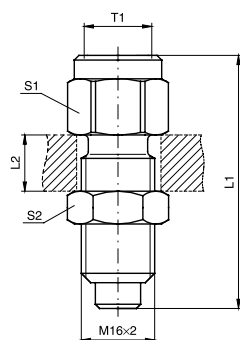
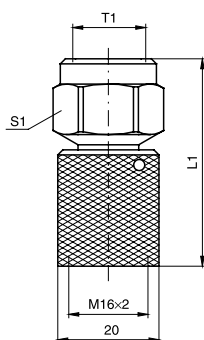


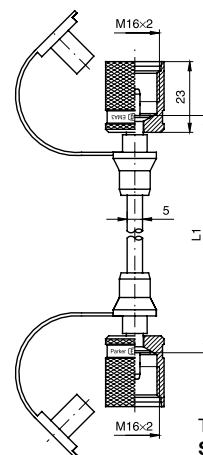
## MAV...MA3 - MAVMD...MA3 - SMA3



Pressure gauge connector:  
**MAV...MA3**



Gauge-Direct-Connector:  
**MAVMD...MA3**



Test hose:  
**SMA3**

T1	L1	L2 max.	S1	S2	Weight g/1 piece	Order code	PN (bar) CF	DF**
G 1/4	54.0	12	19	19	74	<b>MAV1/4MA3</b>	630	4.0
G 1/2	64.0	12	27	19	129	<b>MAV1/2MA3</b>	630	4.0
G 1/4	41.0		19		61	<b>MAVMD1/4MA3</b>	630	4.0
G 1/2	51.5		27		103	<b>MAVMD1/2MA3</b>	630	4.0
	200.0				73	<b>SMA3-200</b>	630	2.5
	300.0				74	<b>SMA3-300</b>	630	2.5
	400.0				74	<b>SMA3-400</b>	630	2.5
	630.0				79	<b>SMA3-630</b>	630	2.5
	800.0				83	<b>SMA3-800</b>	630	2.5
	1000.0				87	<b>SMA3-1000</b>	630	2.5
	1500.0				95	<b>SMA3-1500</b>	630	2.5
	2000.0				105	<b>SMA3-2000</b>	630	2.5
	2500.0				110	<b>SMA3-2500</b>	630	2.5
	3200.0				125	<b>SMA3-3200</b>	630	2.5
	4000.0				137	<b>SMA3-4000</b>	630	2.5

Order code suffixes			
	Stainless Steel		
Suffix	71		
Example	MAV1/4MA371		