

## 600013-... - Check valve for piping-system assembly

Valve crack pressures: 0.5 bar DN6 - DN40 (1/8" to 2")

**Body:**

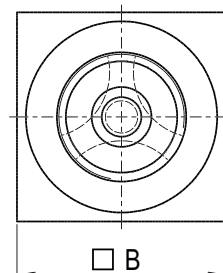
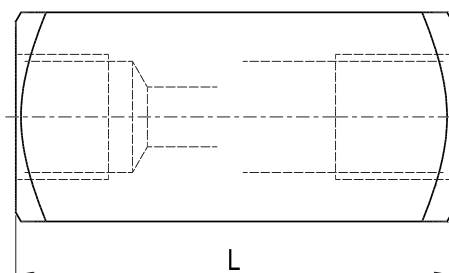
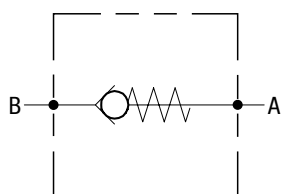
Steel

**Temperature:**

-20 °C to + 100 °C

**Cracking pressure:**

0,5 bar\*



DN	Thread G	L (mm)	B (mm)	Weight kg/1 piece	Order code*	PN (bar)
06	G 1/8	45	16	0,10	<b>600013-02-02</b>	500
08	G 1/4	55	25	0,20	<b>600013-04-04</b>	500
10	G 3/8	65	30	0,40	<b>600013-06-06</b>	500
12	G 1/2	73	35	0,70	<b>600013-08-08</b>	500
16	G 3/4	88	45	1,20	<b>600013-12-12</b>	500
20	G1	127	50	2,00	<b>600013-16-16</b>	500
25	G 1 1/4	143	60	3,30	<b>600013-20-20</b>	400
30	G 1 1/2	143	70	4,20	<b>600013-24-24</b>	350
40	G 2	165	90	7,20	<b>600013-32-32</b>	350

\*Option: Cracking pressure 4,5 bar