

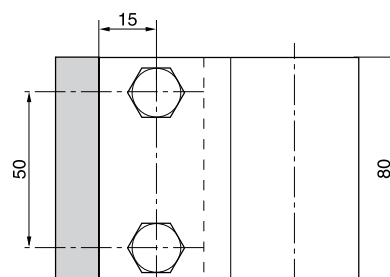
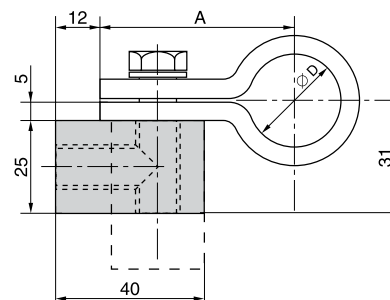
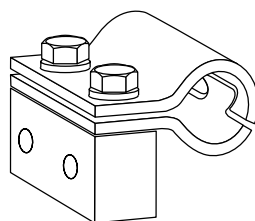
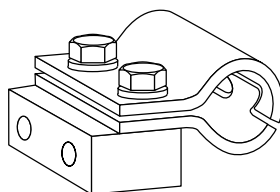
## Hydraulic steel-clamps

### Hydraulic steel-clamps

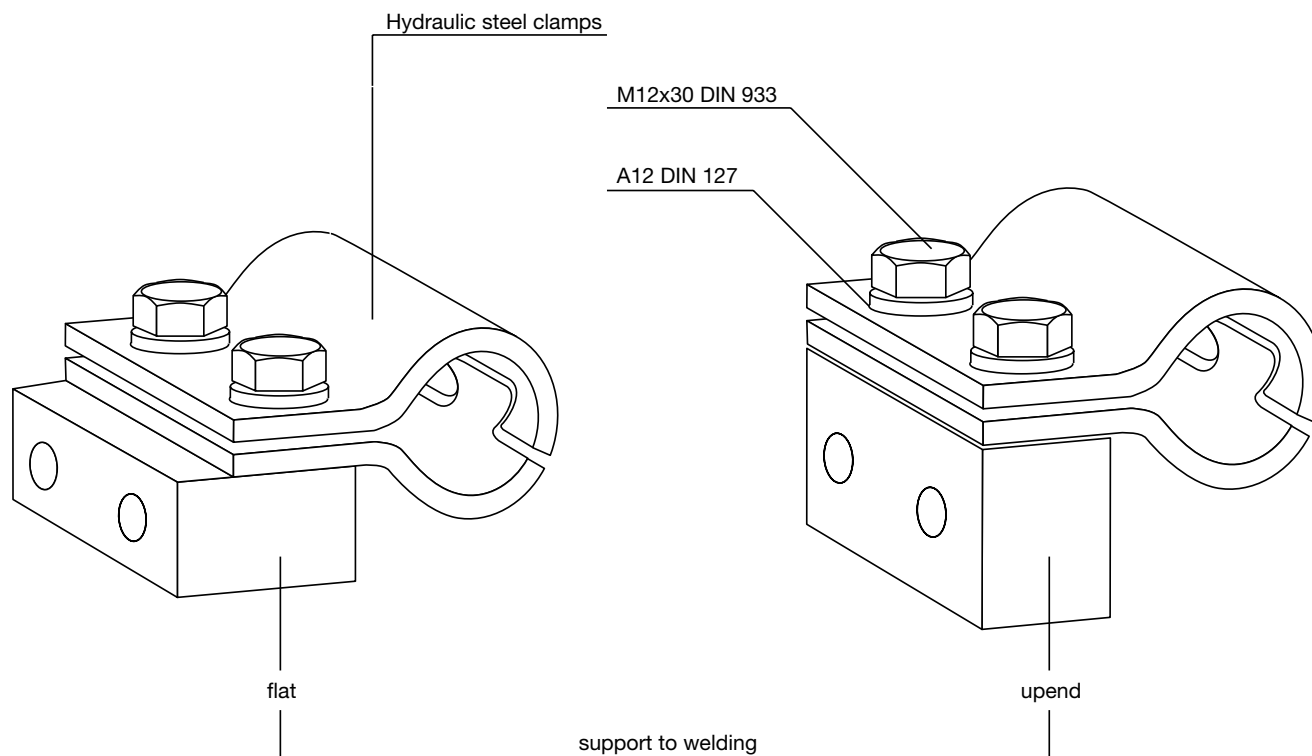
**HSRS** hydraulic steel-clamps are mainly used in the field of building machinery.

The support-block is welded to the machine body or another component either in upend or flat position. The tube-clamp is screwed on.

The robust construction of the clamp has an impact- and vibrationabsorbing effect. The small dimension/height of the clamp allows hydraulic cables to be fitted later on – e. g. for installing additional equipment to building machinery.



Order code	Measurement	
	Ø D	A
<b>HSRS25</b>	25	52.5
<b>HSRS30</b>	30	55.0
<b>HSRS35</b>	35	57.5
<b>HSRS38</b>	38	59.0
<b>HSRS42</b>	42	61.0
<b>HSRS50</b>	50	65.0



Hydraulic steel-clamps

Elastomere Inlay for HSRS

Hydraulic steel tube clamp **HSRS** also available with Elastomere inlay

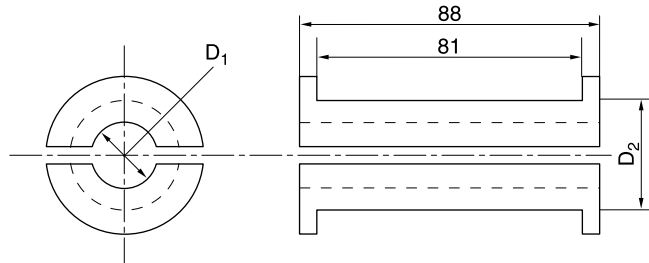
The advantages:

- complete outside tube diameter
- Safe fastening method even for very sensitive tube and hoses lines
- Only one clamp for different tube diameters

Material:

Santoprene 64 Shore

- high oil and weathering resistance
- temperature stability between -40 °C and +125 °C



Order code	Nominal size D2	mm O.D. D1
EE12X	HSRS25	12
EE15X		15
EE20X	HSRS30	20
EE25X	HSRS35	25
EE30X	HSRS42	30
EE35X	HSRS50	35
EE38X		38
EE42X		42

