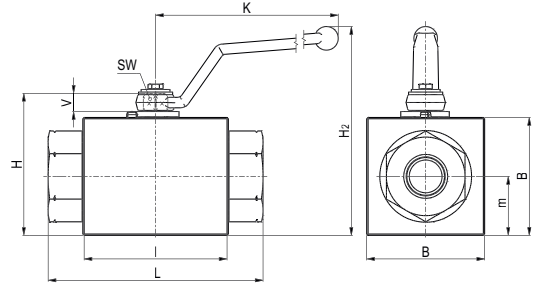
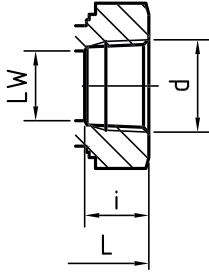


**9028-.. - 2-way NPT ball valve (800 bar)**

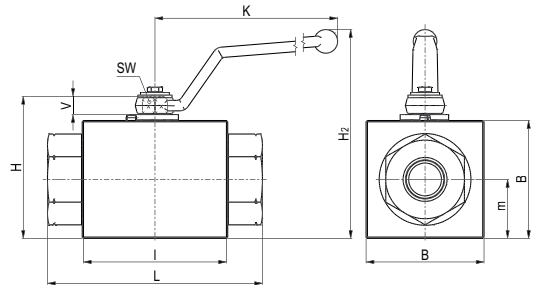
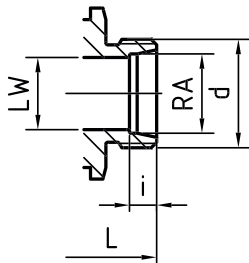
ANSI B1.20.1 NPT Female thread



l	B	H	m	V	SW	K	H2	LW	L	i	d	Weight kg/1 piece	Order code	PN (bar)
76	50	64	25	11	9	115	101	6	130	13,7	1/4 NPT	1,92	9028-04	800
76	50	64	25	11	9	115	101	13	130	13,5	3/8 NPT	1,85	9028-06	800
76	50	64	25	11	9	115	101	13	130	17	1/2 NPT	1,79	9028-08	800
111	90	108	45	14	14	171	159	20	161	18,3	3/4 NPT	7,83	9028-12	800
111	90	108	45	14	14	171	159	25	164	21,6	1 NPT	7,68	9028-16	800

**9029-.. - 2-way Metric ball valve (800 bar)**

DIN 2353 / ISO 8434-1 Heavy Series



l	B	H	m	V	SW	K	H2	LW	RA	L	i	d	Weight kg/1 piece	Order code	PN (bar)
76	50	64	25	11	9	115	101	5	8	110	7	M 16x1.5	1,60	9029-08	800
76	50	64	25	11	9	115	101	6	10	114	7,5	M 18x1.5	1,60	9029-10	800
76	50	64	25	11	9	115	101	8	12	114	7,5	M 20x1.5	1,64	9029-12	800
76	50	64	25	11	9	115	101	13	14	114	8	M 22x1.5	1,56	9029-14	800
76	50	64	25	11	9	115	101	13	16	114	8,5	M 24x1.5	1,58	9029-16	800
76	50	64	25	11	9	115	101	13	20	118	10,5	M 30x2.0	1,63	9029-20	800
111	90	108	45	14	14	171	159	20	25	162	12	M 36x2.0	7,31	9029-25	800
111	90	108	45	14	14	171	159	25	30	166	13,5	M42 x2.0	7,40	9029-30	800

Please note the pressure ratings of the tube connections!