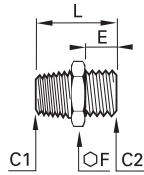


Nickel-Plated Brass Adaptors

0192 Unequal Straight Adaptor, Male BSPT/BSPP Thread

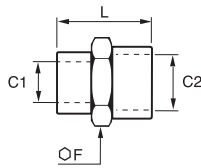
Nickel-plated brass



C1	C2		E	F	L	Kg
R1/8	G1/4	0192 10 13	9.5	17	23.5	0.019
R1/4	G1/4	0192 13 13	9.5	17	27.5	0.024
	G1/2	0192 13 21	11	27	31.5	0.068
R3/8	G1/4	0192 17 13	9.5	17	28	0.025
	G1/2	0192 17 21	11	27	31.5	0.060
R1/2	G1/2	0192 21 21	11	27	34	0.061

0902 Equal and Unequal Adaptor, Female BSPP and Metric Thread

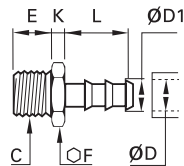
Nickel-plated brass



C1	C2		F	L	Kg
M5x0.8	M5x0.8	0902 00 19	8	11	0.003
	G1/8	0902 19 10	14	13.5	0.009
G1/8	G1/8	0902 00 10	14	15	0.010
	G1/4	0902 10 13	17	19	0.017
	G3/8	0902 10 17	22	20	0.027
G1/4	G1/2	0902 10 21	24	20	0.015
	G1/4	0902 00 13	17	22	0.020
	G3/8	0902 13 17	22	22.5	0.030
G3/8	G1/2	0902 13 21	26	24	0.033
	G3/8	0902 00 17	22	23	0.033
	G1/2	0902 17 21	24	26	0.036
G1/2	G1/2	0902 00 21	26	28	0.048
	G3/4	0902 21 27	32	30	0.077
	G1	0902 21 34	40	39	0.145
G3/4	G3/4	0902 00 27	32	32	0.076
	G1	0902 27 34	40	41	0.146

0191 Tailpiece Adaptor for Rubber Hose, Male BSPP Thread

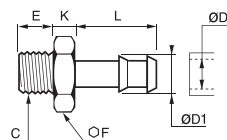
Nickel-plated brass



ØD	ØD1	C		E	F	K	L	Kg
4	6	G1/4	0191 04 13	9.5	17	5	22.5	0.019
		G1/4	0191 07 13	9.5	17	5	22.5	0.022
7	9	G1/2	0191 07 21	11	27	7	29.5	0.056
		G1/4	0191 10 13	9.5	17	5	22.5	0.020
10	12.2	G1/2	0191 10 21	11	27	7	29.5	0.060
		G1/4	0191 13 13	9.5	17	5	22.5	0.022
13	15.2	G1/2	0191 13 21	11	27	7	29.5	0.059
		G1/2	0191 16 21	11	27	7	36.5	0.068

0931 Tailpiece Adaptor for Rubber Hose, Male BSPP Thread

Nickel-plated brass



ØD	ØD1	C		E	F	K	L	Kg
4	4.5	M5x0.8	0931 04 19	4	8	4	15	0.003
		G1/8	0931 06 10	6	12	4.5	19	0.009
6	7	G1/4	0931 06 13	8	14	5	19	0.013
		G1/8	0931 07 10	6	12	4	19	0.009
7	8	G1/4	0931 07 13	8	14	5	19	0.013
		G3/8	0931 07 17	9	19	5	19	0.022
		G1/8	0931 08 10	6	12	4	19	0.009
8	9	G1/4	0931 08 13	8	14	5	19	0.014
		G3/8	0931 08 17	9	19	5	19	0.022
10	12	G1/4	0931 10 13	8	14	5	19	0.016
		G3/8	0931 10 17	9	19	5	19	0.023
15	17	G1/2	0931 10 21	10	22	6	20	0.031
		G3/8	0931 15 17	9	19	6	24	0.030
18	20	G1/2	0931 15 21	10	22	6	24	0.038
		G1/2	0931 18 21	10	22	6	24	0.040