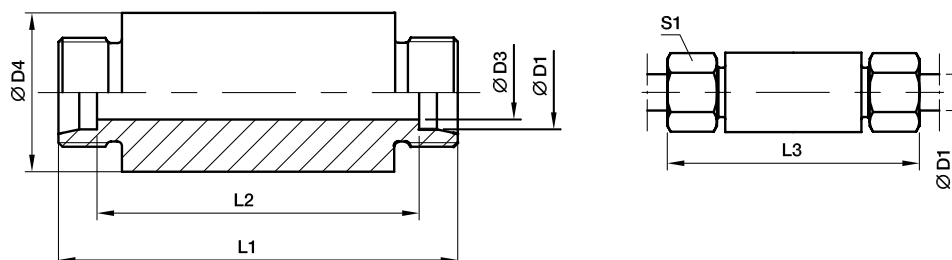


ESV - Weld bulkhead fitting

EO 24° cone end / EO 24° cone end



| Series | Ø D1 | D3 | D4 | L1 | L2 | L3 | S1 | Weight g/1 piece | Order code | PN (bar) | |
|--------|------|----|----|-----|----|-----|----|------------------|------------|----------|-----------------|
| | | | | | | | | | | Steel | Stainless Steel |
| L | 06 | 4 | 18 | 70 | 56 | 85 | 14 | 103 | ESV06L | 500 | 315 |
| | 08 | 6 | 20 | 70 | 56 | 85 | 17 | 121 | ESV08L | 500 | 315 |
| | 10 | 8 | 22 | 72 | 58 | 87 | 19 | 142 | ESV10L | 500 | 315 |
| | 12 | 10 | 25 | 72 | 58 | 87 | 22 | 176 | ESV12L | 400 | 315 |
| | 15 | 12 | 28 | 84 | 70 | 100 | 27 | 262 | ESV15L | 400 | 315 |
| | 18 | 15 | 32 | 84 | 69 | 101 | 32 | 333 | ESV18L | 400 | 315 |
| | 22 | 19 | 36 | 88 | 73 | 105 | 36 | 394 | ESV22L | 250 | 160 |
| | 28 | 24 | 40 | 88 | 73 | 106 | 41 | 448 | ESV28L | 250 | 160 |
| | 35 | 30 | 50 | 92 | 71 | 114 | 50 | 713 | ESV35L | 250 | 160 |
| | 42 | 36 | 60 | 92 | 70 | 115 | 60 | 997 | ESV42L | 250 | 160 |
| S | 06 | 4 | 20 | 74 | 60 | 89 | 17 | 135 | ESV06S | 800 | 630 |
| | 08 | 5 | 22 | 74 | 60 | 89 | 19 | 163 | ESV08S | 800 | 630 |
| | 10 | 7 | 25 | 74 | 59 | 91 | 22 | 201 | ESV10S | 800 | 630 |
| | 12 | 8 | 28 | 74 | 59 | 91 | 24 | 249 | ESV12S | 630 | 630 |
| | 14 | 10 | 30 | 88 | 72 | 107 | 27 | 337 | ESV14S | 630 | 630 |
| | 16 | 12 | 35 | 88 | 71 | 107 | 30 | 441 | ESV16S | 630 | 400 |
| | 20 | 16 | 38 | 92 | 71 | 114 | 36 | 509 | ESV20S | 420 | 400 |
| | 25 | 20 | 45 | 96 | 72 | 120 | 46 | 720 | ESV25S | 420 | 400 |
| | 30 | 25 | 50 | 100 | 73 | 126 | 50 | 873 | ESV30S | 420 | 400 |
| | 38 | 32 | 60 | 104 | 72 | 133 | 60 | 1248 | ESV38S | 420 | 315 |

| Order code suffixes | | | |
|---------------------|-----------------|--|-----------|
| | Stainless Steel | | Body Only |
| Suffix | 71 | | X |
| Example | ESV16S71 | | ESV16SX |