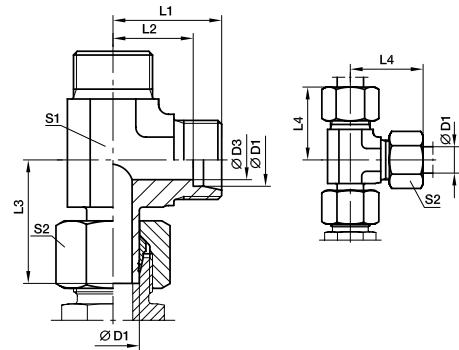


EVL - Standpipe run tee

EO 24° cone end / EO stand pipe adjustable



With pre-assembled nut and progressive ring for connection.
Final assembly (in appropriate body) at least 1/4 turn beyond the point of clearly perceptible resistance.

Series	∅ D1	D3	L1	L2	L3	L4	S1	S2	Weight g/1 piece	Order code	PN (bar) ¹⁾		
											CF	71	MS
L	06	4	19	12.0	26.0	27	12	14	40	EVL06L	315	315	200
	08	6	21	14.0	27.5	29	12	17	50	EVL08L	315	315	200
	10	8	22	15.0	29.0	30	14	19	64	EVL10L	315	315	200
	12	10	24	17.0	30.5	32	17	22	93	EVL12L	315	315	200
	15	12	28	21.0	32.5	36	19	27	147	EVL15L	315	315	200
	18	15	31	23.5	35.5	40	24	32	229	EVL18L	315	315	200
	22	19	35	27.5	39.0	44	27	36	296	EVL22L	160	160	
	28	24	38	30.5	43.5	47	36	41	416	EVL28L	160	160	
	35	30	45	34.5	54.5	56	41	50	661	EVL35L	160	160	
42	36	51	40.0	60.0	63	50	60	1105	EVL42L	160	160		
S	06	4	23	16.0	27.0	31	12	17	57	EVL06S	630	630	
	08	5	24	17.0	29.0	32	14	19	84	EVL08S	630	630	
	10	7	25	17.5	32.0	34	17	22	116	EVL10S	630	630	
	12	8	29	21.5	33.0	38	17	24	137	EVL12S	630	630	
	14	10	30	22.0	35.0	40	19	27	175	EVL14S	400	400	
	16	12	33	24.5	37.5	43	24	30	259	EVL16S	400	400	
	20	16	37	26.5	44.5	48	27	36	371	EVL20S	400	400	
	25	20	42	30.0	50.5	54	36	46	647	EVL25S	400	400	
	30	25	49	35.5	56.5	62	41	50	906	EVL30S	400	400	
38	32	57	41.0	66.5	72	50	60	1549	EVL38S	315	315		

Order code suffixes			
	Stainless Steel	Brass	Body Only
Suffix	71	MS	OMD
Example	EVL15L71	EVL15LMS	EVL15LOMD