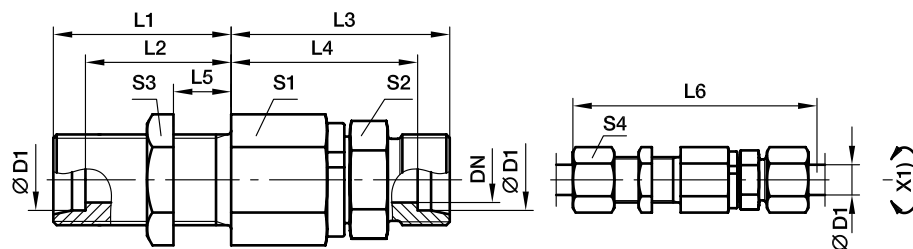


DG 107 - Straight bulkhead ball bearing rotary union

EO 24° cone end / EO 24° cone end



X1) Axis

| Series | Ø D1 | DN | T1 | L1 | L2 | L3 | L4 | L5 | L6 | S1 | S2 | S3 | S4 | Weight g/1 piece | Order code | |
|--------|------|------|----------|----|------|----|------|----|-----|----|----|----|----|------------------|------------|------------------------------|
| S | 06 | 5.0 | M 14×1.5 | 23 | 16.0 | 49 | 42.0 | 5 | 87 | 22 | 17 | 19 | 17 | 134 | DG107/06S | Pressure ratings see chart 1 |
| | 08 | 5.0 | M 16×1.5 | 23 | 16.0 | 49 | 42.0 | 5 | 87 | 22 | 17 | 22 | 19 | 143 | DG107/08S | |
| | 12 | 9.5 | M 20×1.5 | 23 | 15.5 | 60 | 52.5 | 5 | 100 | 30 | 24 | 27 | 24 | 291 | DG107/12S | |
| | 16 | 9.5 | M 24×1.5 | 26 | 17.5 | 60 | 51.5 | 5 | 105 | 30 | 27 | 32 | 30 | 328 | DG107/16S | |
| | 20 | 16.0 | M 30×2.0 | 39 | 28.5 | 76 | 65.5 | 15 | 137 | 41 | 36 | 41 | 36 | 710 | DG107/20S | |
| | 25 | 16.0 | M 36×2.0 | 42 | 30.0 | 78 | 66.0 | 15 | 144 | 41 | 41 | 46 | 46 | 847 | DG107/25S | |
| | 30 | 26.0 | M 42×2.0 | 44 | 30.5 | 89 | 75.5 | 15 | 159 | 60 | 46 | 50 | 50 | 1533 | DG107/30S | |
| | 38 | 26.0 | M 52×2.0 | 47 | 31.0 | 92 | 76.0 | 15 | 168 | 60 | 55 | 65 | 60 | 1930 | DG107/38S | |