

# CRIMP FITTINGS

PARKER SERIE 73



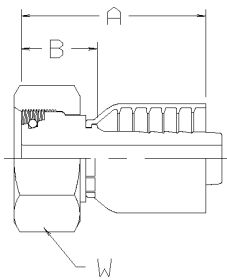
**GEEVEHYDRAULICS B.V.**

HYDRAULISCHE SLANGEN & KOMPONENTEN



For hose types: 731

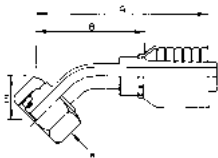
**C9 - DIN 20 078 P Heavy Series Metric  
Swivel Female**



XXXXX-XX-XX Part Number	Hose-I.D.				Thread metric	Tube O.D. mm	A mm	B mm	W mm
	DN	Inch	Size	mm					
1C973-20-12	20	3/4	-12	19,0	M30x2	20	81	33	36
1C973-25-12	20	3/4	-12	19,0	M36x2	25	80	32	46
1C973-20-16	25	1	-16	25,4	M30x2	20	86	36	36
1C973-25-16	25	1	-16	25,4	M36x2	25	87	36	46
1C973-30-16	25	1	-16	25,4	M42x2	30	87	36	50
1C973-30-20	32	1-1/4	-20	31,8	M42x2	30	106	42	50
1C973-38-20	32	1-1/4	-20	31,8	M52x2	38	102	35	60

Fittings with standard O-Ring seals can be used for temperatures from -30 °C up to +105 °C.  
Find O-Rings in section I. Special O-Rings are available on request.

**0C - DIN 20 078 P Heavy Series Metric  
Swivel Female 45° Elbow**



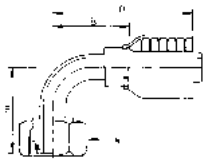
XXXXX-XX-XX Part Number	Hose-I.D.				Thread metric	Tube O.D. mm	A mm	B mm	E mm	W mm
	DN	Inch	Size	mm						
10C73-20-12	20	3/4	-12	19,1	M30x2	20	112	64	28	36
10C73-25-12	20	3/4	-12	19,0	M36x2	25	113	65	29	46
10C73-30-16	25	1	-16	25,4	M42x2	30	126	73	34	50
10C73-38-20	32	1-1/4	-20	31,8	M52x2	38	161	97	37	60
10C73-38-24	40	1.1/2	-24	38,1	M52x2	38	175	113	42	60

Fittings with standard O-Ring seals can be used for temperatures from -30 °C up to +105 °C.  
Find O-Rings in section I. Special O-Rings are available on request.

Material: zinc plated - yellow chromated mild steel

Only items priced in current price list are carried in stock.  
Dimensions shown may be changed at any time without prior notice.

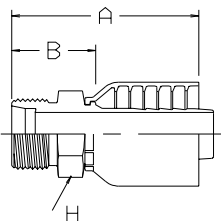
**1C - DIN 20 078 P Heavy Series Metric  
Swivel Female 90° Elbow**



XXXXX-XX-XX Part Number	Hose-I.D.				Thread metric	Tube O.D. mm	A mm	B mm	E mm	W mm
	DN	Inch	Size	mm						
11C73-20-12	20	3/4	-12	19,1	M30x2	20	101	53	57	36
11C73-25-12	20	3/4	-12	19,1	M36x2	25	101	52	59	46
11C73-25-16	25	1	-16	25,4	M36x2	25	116	65	68	46
11C73-30-16	25	1	-16	25,4	M42x2	30	122	72	73	50
11C73-30-20	32	1-1/4	-20	31,8	M42x2	30	138	73	74	50
11C73-38-20	32	1-1/4	-20	31,8	M52x2	38	151	87	78	60

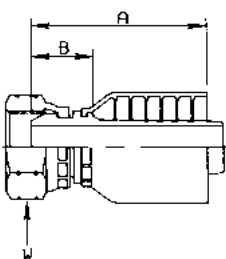
Fittings with standard O-Ring seals can be used for temperatures from -30 °C up to +105 °C.  
Find O-Rings in section I. Special O-Rings are available on request.

**D2 - DIN 20 078 E Heavy Series Metric  
Male Stud**



XXXXX-XX-XX Part Number	Hose-I.D.				Thread metric	Tube O.D. mm	A mm	B mm	H mm
	DN	Inch	Size	mm					
1D273-20-12	20	3/4	-12	19,1	M30x2	20	84	35	30
1D273-25-12	20	3/4	-12	19,1	M36x2	25	86	37	36
1D273-30-16	25	1	-16	25,4	M42x2	30	94	42	46
1D273-38-20	32	1-1/4	-20	31,8	M52x2	38	112	46	55

**92 - BSP Swivel Female**



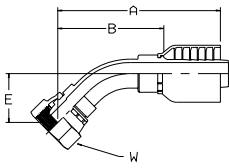
XXXXX-XX-XX Part Number	Hose-I.D.				BSP thread	A mm	B mm	W mm
	DN	Inch	Size	mm				
19273-12-12	20	3/4	-12	19,1	3/4x14	77	29	32
19273-16-16	25	1	-16	25,4	1x11	89	38	41
19273-20-20	32	1-1/4	-20	31,8	1-1/4x11	101	37	50
19273-24-24	40	1-1/2	-24	38,1	1-1/2x11	99	34	55
19273-32-32	50	2	-32	50,8	2x11	113	38	70

Material: zinc plated - yellow chromated mild steel

Only items priced in current price list are carried in stock.  
Dimensions shown may be changed at any time without prior notice.

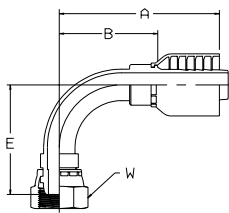
For hose types: 731

**B1 - BSP Swivel Female 45° Elbow**



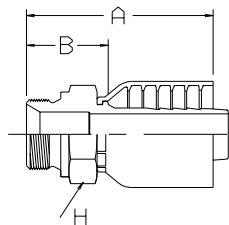
XXXXX-YY-YY Part Number	Hose-I.D.				BSP thread	A mm	B mm	E mm	W mm
	DN	Inch	Size	mm					
1B173-12-12	20	3/4	-12	19,1	3/4x14	109	61	25	32
1B173-16-16	25	1	-16	25,4	1x11	136	84	39	41
1B173-20-20	32	1-1/4	-20	31,8	1-1/4x11	169	105	44	50
1B173-24-24	40	1-1/2	-24	38,1	1-1/2x11	172	109	38	55
1B173-32-32	50	2	-32	50,8	2x11	200	125	52	70

**B2 - BSP Swivel Female 90° Elbow**



XXXXX-YY-YY Part Number	Hose-I.D.				BSP thread	A mm	B mm	E mm	W mm
	DN	Inch	Size	mm					
1B273-12-12	20	3/4	-12	19,1	3/4x14	106	58	62	32
1B273-16-16	25	1	-16	25,4	1x11	121	70	76	41
1B273-20-20	32	1-1/4	-20	31,8	1-1/4x11	151	87	80	50
1B273-24-24	40	1-1/2	-24	38,1	1-1/2x11	166	103	103	55
1B273-32-32	50	2	-32	50,8	2x11	192	117	117	70

**D9 - BSP Male Stud (DIN 3852 - Form A)**

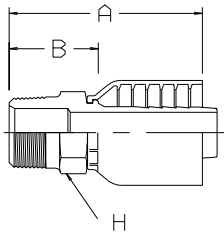


XXXXX-YY-YY Part Number	Hose-I.D.				BSP thread	A mm	B mm	H mm
	DN	Inch	Size	mm				
1D973-12-12	20	3/4	-12	19,1	3/4x14	87	38	32
1D973-16-16	25	1	-16	25,4	1x11	95	43	41
1D973-20-20	32	1-1/4	-20	31,8	1-1/4x11	114	47	50
1D973-24-24	40	1-1/2	-24	38,1	1-1/2x11	114	49	55
1D973-32-32	50	2	-32	50,8	2x11	129	54	70

Material: zinc plated - yellow chromated mild steel

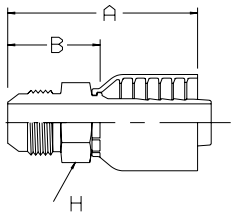
Only items priced in current price list are carried in stock.  
Dimensions shown may be changed at any time without prior notice.

### 01 - NPTF Male Pipe



XXXXX-XX-YY Part Number	Hose-I.D.				NPTF thread	A mm	B mm	H inch
	DN	Inch	Size	mm				
10173-12-12	20	3/4	-12	19,1	3/4x14	90	45	1-1/8
10173-16-16	25	1	-16	25,4	1x11-1/2	100	51	1-3/8
10173-20-20	32	1-1/4	-20	31,8	1-1/4x11-1/2	125	62	1-3/4
10173-20-20-SM	32	1.1/4	-20	31,8	1-1/4x11-1/2	125	61	46
10173-24-24	40	1-1/2	-24	38,1	1-1/2x11-1/2	124	65	2
10173-32-32	50	2	-32	50,8	2x11-1/2	141	73	2-1/2

### 03 - JIC 37° Male



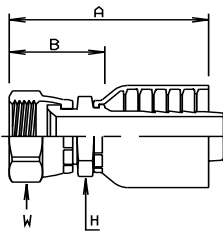
XXXXX-XX-YY Part Number	Hose-I.D.				UNF thread	A mm	B mm	H inch (mm)
	DN	Inch	Size	mm				
10373-12-12	20	3/4	-12	19,1	1-1/16x12	88	43	1-1/8
10373-12-12-SM	20	3/4	-12	19,1	1-1/16x12	89	41	30
10373-16-12	20	3/4	-12	19,1	1-5/16x12	93	48	1-3/8
10373-16-16	25	1	-16	25,4	1-5/16x12	96	48	1-3/8
10373-20-20	32	1-1/4	-20	31,8	1-5/8x12	117	54	1-3/4
10373-24-20	32	1-1/4	-20	31,8	1-7/8x12	125	62	2
10373-24-24	40	1-1/2	-24	38,1	1-7/8x12	120	62	2
10373-24-24-SM	40	1.1/2	-24	38,1	1-7/8x12	122	59	50
10373-32-32	50	2	-32	50,8	2-1/2x12	143	74	2-1/2
10373-32-32-SM	50	2	-32	50,8	2-1/2x12	143	72	65

Material: without suffix = zinc plated - yellow chromated mild steel  
SM = Metric Hexagon

Only items priced in current price list are carried in stock.  
Dimensions shown may be changed at any time without prior notice.

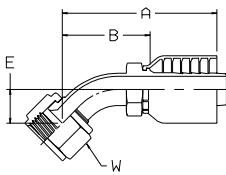
For hose types: 731

06 - JIC 37° Swivel Female



XXXXX-XX-YY Part Number	Hose-I.D.				UNF thread	A mm	B mm	H inch (mm)	W inch (mm)
	DN	Inch	Size	mm					
10673-12-12	20	3/4	-12	19,1	1-1/16x12	93	47	1-1/8	1-1/4
10673-12-12-SM	20	3/4	-12	19,1	1-1/16x12	93	45	30	32
10673-16-12	20	3/4	-12	19,1	1-5/16x12	95	47	1-3/8	1-1/2
10673-16-16	25	1	-16	25,4	1-5/16x12	102	53	1-3/8	1-1/2
10673-16-16-SM	25	1	-16	25,4	1-5/16x12	103	52	36	41
10673-20-16	25	1	-16	25,4	1-5/8x12	108	60	1-3/4	2
10673-16-20	32	1-1/4	-20	31,8	1-5/16x12	115	53	1-3/4	1-1/2
10673-20-20	32	1-1/4	-20	31,8	1-5/8x12	125	62	1-3/4	2
10673-20-20-SM	32	1-1/4	-20	31,8	1-5/8x12	125	61	46	55
10673-24-20-SM	32	1-1/4	-20	31,8	1-7/8x12	130	66	50	60
10673-24-24	40	1-1/2	-24	38,1	1-7/8x12	126	69	2	2-1/4
10673-24-24-SM	40	1-1/2	-24	38,1	1-7/8x12	128	66	50	60
10673-32-32	50	2	-32	50,8	2-1/2x12	150	81	2-1/2	2-7/8

37 - JIC 37° Swivel Female 45° Elbow

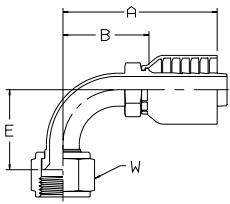


XXXXX-XX-YY Part Number	Hose-I.D.				UNF thread	A mm	B mm	E mm	W inch (mm)
	DN	Inch	Size	mm					
13773-12-12	20	3/4	-12	19,1	1-1/16x12	116	72	31	1-1/4
13773-16-16	25	1	-16	25,4	1-5/16x12	130	77	33	1-1/2
13773-20-16-SM	25	1	-16	25,4	1-5/8x12	143	92	47	55
13773-20-20	32	1-1/4	-20	31,8	1-5/8x12	171	109	47	2
13773-24-24	40	1-1/2	-24	38,1	1-7/8x12	171	107	46	2-1/4
13773-24-24-SM	40	1-1/2	-24	38,1	1-7/8x12	194	132	58	60
13773-32-32	50	2	-32	50,8	2-1/2x12	251	168	67	2-7/8
13773-32-32-SM	50	2	-32	50,8	2-1/2x12	236	165	75	75

Material: without suffix = zinc plated - yellow chromated mild steel  
SM = Metric Hexagon

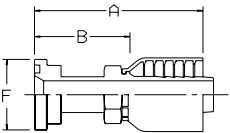
Only items priced in current price list are carried in stock.  
Dimensions shown may be changed at any time without prior notice.

### 39 - JIC 37° Swivel Female 90° Elbow (Short)



XXXXX-XX-XX Part Number	Hose-I.D.				UNF thread	A mm	B mm	E mm	W inch (mm)
	DN	Inch	Size	mm					
13973-12-12	20	3/4	-12	19,1	1-1/16x12	103	59	62	1-1/2
13973-16-12	20	3/4	-12	19,1	1-5/16x12	115	94	41	1-1/2
13973-16-16	25	1	-16	25,4	1-5/16x12	118	70	74	1-1/2
13973-20-16-SM	25	1	-16	25,4	1-5/8x12	118	67	85	55
13973-20-20	32	1-1/4	-20	31,8	1-5/8x12	143	81	85	2
13973-20-20-SM	32	1-1/4	-20	31,8	1-5/8x12	151	87	85	55
13973-24-20-SM	32	1-1/4	-20	31,8	1-7/8x12	151	87	102	60
13973-24-24	40	1-1/2	-24	38,1	1-7/8x12	180	122	102	2-1/4
13973-24-24-SM	40	1-1/2	-24	38,1	1-7/8x12	194	119	102	60
13973-32-32	50	2	-32	50,8	2-1/2x12	223	154	152	2-7/8
13973-32-32-SM	50	2	-32	50,8	2-1/2x12	223	152	152	75

### 15 - SAE Code 61 Flange - Standard Series - DIN 20 078 R 4A - SAE 5000 psi Flange - Standard Series



XXXXX-XX-XX Part Number	Hose-I.D.				Flange size Inch	A mm	B mm	F mm
	DN	Inch	Size	mm				
11573-12-12	20	3/4	-12	19,1	3/4	110	62	38
11573-16-12	20	3/4	-12	19,1	1	110	62	45
11573-16-16	25	1	-16	25,4	1	117	67	45
11573-16-20	32	1-1/4	-20	31,8	1	133	69	45
14A73-20-16	25	1	-16	25,4	1-1/4	85	34	51
14A73-20-20	32	1-1/4	-20	31,8	1-1/4	141	77	51
14A73-24-20	32	1-1/4	-20	31,8	1-1/2	103	40	60
14A73-24-24	40	1-1/2	-24	38,1	1-1/2	166	107	60
14A73-32-24	40	1-1/2	-24	38,1	2	113	50	71
14A73-24-32	50	2	-32	50,8	1-1/2	156	87	60
14A73-32-32	50	2	-32	50,8	2	156	87	71

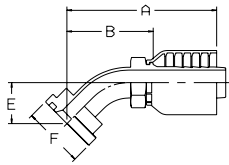
Find SAE flange halves in section I.  
Fittings with standard O-Ring seals can be used for temperatures from -30 °C up to +105 °C.  
Find O-Rings in section I. Special O-Rings are available on request.

Material: without suffix = zinc plated - yellow chromated mild steel  
SM = Metric Hexagon

Only items priced in current price list are carried in stock.  
Dimensions shown may be changed at any time without prior notice.

For hose types: 731

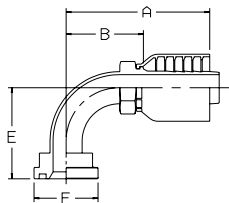
**17 - SAE Code 61 Flange - 45° Elbow - DIN 20 078 R**  
**4F - SAE 5000 psi Flange - 45° Elbow**



XXXXX-XX-XX Part Number	Hose-I.D.				Flange size Inch	A mm	B mm	E mm	F mm
	DN	Inch	Size	mm					
11773-12-12	20	3/4	-12	19,1	3/4	109	64	26	38
11773-16-12	20	3/4	-12	19,1	1	109	64	26	44
14F73-20-16	25	1	-16	25,4	1-1/4	136	85	32	51
11773-16-16	25	1	-16	25,4	1	127	78	32	44
14F73-20-20	32	1-1/4	-20	31,8	1-1/4	162	99	38	51
14F73-24-20	32	1-1/4	-20	31,8	1-1/2	162	99	38	60
14F73-24-24	40	1-1/2	-24	38,1	1-1/2	178	115	44	60
14F73-32-32	50	2	-32	50,8	2	214	145	56	71

Find SAE flange halves in section I.  
Fittings with standard O-Ring seals can be used for temperatures from -30 °C up to +105 °C.  
Find O-Rings in section I. Special O-Rings are available on request.

**19 - SAE Code 61 Flange - 90° Elbow - DIN 20 078 R**  
**4N - SAE 5000 psi Flange - 90° Elbow**



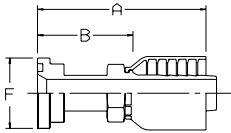
XXXXX-XX-XX Part Number	Hose-I.D.				Flange size Inch	A mm	B mm	E mm	F mm
	DN	Inch	Size	mm					
11973-12-12	20	3/4	-12	19,1	3/4	110	65	57	38
11973-16-12	20	3/4	-12	19,1	1	110	65	57	44
11973-16-16	25	1	-16	25,4	1	122	71	70	45
14N73-20-16	25	1	-16	25,4	1-1/4	118	68	70	51
14N73-20-20	32	1-1/4	-20	31,8	1-1/4	155	91	90	51
14N73-24-20	32	1-1/4	-20	31,8	1-1/2	155	91	90	60
14N73-20-24	40	1-1/2	-24	38,1	1-1/4	149	90	104	51
14N73-32-24	40	1-1/2	-24	38,1	2	166	107	104	71
14N73-32-32	50	2	-32	50,8	2	199	130	138	71

Find SAE flange halves in section I.  
Fittings with standard O-Ring seals can be used for temperatures from -30 °C up to +105 °C.  
Find O-Rings in section I. Special O-Rings are available on request.

Material: zinc plated - yellow chromated mild steel

Only items priced in current price list are carried in stock.  
Dimensions shown may be changed at any time without prior notice.

**6A - SAE Flange - DIN 20 078 S - Heavy Series - SEA Code 62 Flange**



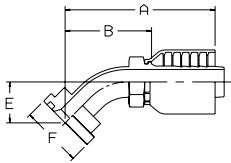
XXXXX-XX-XX Part Number	Hose-I.D.				Flange size Inch	A mm	B mm	F mm
	DN	Inch	Size	mm				
16A73-12-12	20	3/4	-12	19,1	3/4	130	82	41
16A73-16-12	20	3/4	-12	19,1	1	135	87	48
16A73-16-16	25	1	-16	25,4	1	131	81	48
16A73-20-16	25	1	-16	25,4	1-1/4	142	91	54
16A73-16-20	32	1-1/4	-20	31,8	1	149	85	48
16A73-20-20	32	1-1/4	-20	31,8	1-1/4	149	85	54
16A73-24-20	32	1-1/4	-20	31,8	1-1/2	156	93	64
16A73-20-24	40	1-1/2	-24	38,1	1-1/4	158	96	54
16A73-24-24	40	1-1/2	-24	38,1	1-1/2	166	104	64
16A73-32-24	40	1-1/2	-24	38,1	2	174	117	79
16A73-32-32	50	2	-32	50,8	2	231	160	79

Find SAE flange halves in section I.

Fittings with standard O-Ring seals can be used for temperatures from -30 °C up to +105 °C.

Find O-Rings in section I. Special O-Rings are available on request.

**6F - SAE Flange 45° Elbow - Heavy Series  
DIN 20 078 S - SAE Code 62 Flange**



XXXXX-XX-XX Part Number	Hose-I.D.				Flange size Inch	A mm	B mm	E mm	F mm
	DN	Inch	Size	mm					
16F73-12-12	20	3/4	-12	19,1	3/4	119	73	29	41
16F73-16-12	20	3/4	-12	19,1	1	121	76	30	48
16F73-16-16	25	1	-16	25,4	1	129	79	32	48
16F73-20-16	25	1	-16	25,4	1-1/4	134	86	32	54
16F73-20-20	32	1-1/4	-20	31,8	1-1/4	160	97	32	54
16F73-24-20	32	1-1/4	-20	31,8	1-1/2	160	97	35	64
16F73-24-24	40	1-1/2	-24	38,1	1-1/2	179	121	41	64
16F73-32-32	50	2	-32	50,8	2	224	170	57	79

Find SAE flange halves in section I.

Fittings with standard O-Ring seals can be used for temperatures from -30 °C up to +105 °C.

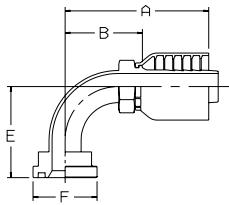
Find O-Rings in section I. Special O-Rings are available on request.

Material: zinc plated - yellow chromated mild steel

Only items priced in current price list are carried in stock.  
Dimensions shown may be changed at any time without prior notice.

For hose types: 731

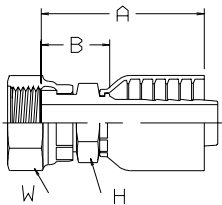
**6N - SAE Flange 90° Elbow - Heavy Series**  
**DIN 20 078 S - SAE Code 62 Flange**



XXXXX-XX-XX Part Number	Hose-I.D.				Flange size Inch	A mm	B mm	E mm	F mm
	DN	Inch	Size	mm					
16N73-12-12	20	3/4	-12	19,1	3/4	109	65	58	41
16N73-12-16	25	1	-16	25,4	3/4	115	69	57	41
16N73-16-16	25	1	-16	25,4	1	122	71	70	48
16N73-20-16	25	1	-16	25,4	1-1/4	122	71	70	54
16N73-20-20	32	1-1/4	-20	31,8	1-1/4	172	108	71	54
16N73-24-20	32	1-1/4	-20	31,8	1-1/2	172	108	76	64
16N73-24-24	40	1-1/2	-24	38,1	1-1/2	166	103	104	64
16N73-32-32	50	2	-32	50,8	2	199	127	138	79

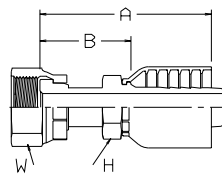
Find SAE flange halves in section I.  
Fittings with standard O-Ring seals can be used for temperatures from -30 °C up to +105 °C.  
Find O-Rings in section I. Special O-Rings are available on request.

**JC - ORFS Swivel Female (Short)**



XXXXX-XX-XX Part Number	Hose-I.D.				UNF thread	A mm	B mm	H mm	W mm
	DN	Inch	Size	mm					
1JC73-12-12-SM	20	3/4	-12	19,1	1-3/16x12	81	33	30	36
1JC73-20-20C-SM	32	1.1/4	-20	31,8	1-11/16x12	106	42	46	50

**JS - ORFS Swivel Female (Long)**

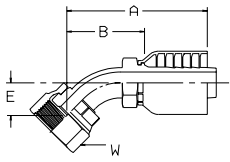


XXXXX-XX-XX Part Number	Hose-I.D.				UNF thread	A mm	B mm	H inch (mm)	W inch (mm)
	DN	Inch	Size	mm					
1JS73-12-12	20	3/4	-12	19,1	1-3/16x12	98	51	1-1/8	1-3/8
1JS73-12-12-SM	20	3/4	-12	19,1	1-3/16x12	98	50	30	36
1JS73-16-12	20	3/4	-12	19,1	1-7/16x12	103	58	1-3/8	1-5/8
1JS73-16-16	25	1	-16	25,4	1-7/16x12	107	58	1-3/8	1-5/8
1JS73-16-16-SM	25	1	-16	25,4	1-7/16x12	103	52	36	41
1JS73-20-16-SM	25	1	-16	25,4	1-11/16x12	114	64	41	50
1JS73-20-20	32	1-1/4	-20	31,8	1-11/16x12	128	65	1-3/4	1-7/8
1JS73-20-20-SM	32	1.1/4	-20	31,8	1-11/16x12	118	54	46	50

Material: without suffix = zinc plated - yellow chromated mild steel  
C = Stainless Steel  
SM = Metric Hexagon

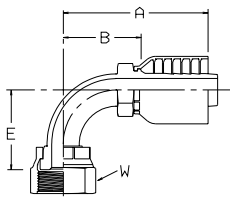
Only items priced in current price list are carried in stock.  
Dimensions shown may be changed at any time without prior notice.

**J7 - ORFS Swivel Female 45° Elbow**



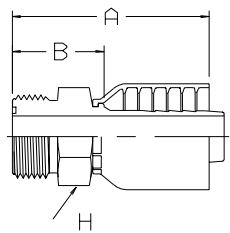
XXXXX-XX-XX Part Number	Hose-I.D.				UNF thread	A mm	B mm	E mm	W mm
	DN	Inch	Size	mm					
1J773-12-12-SM	20	3/4	-12	19,1	1-3/16x12	105	57	21	36
1J773-16-12-SM	20	3/4	-12	19,1	1-7/16x12	107	58	24	41
1J773-20-20-SM	32	1.1/4	-20	31,8	1-11/16x12	154	90	30	50
1J773-24-20-SM	32	1.1/4	-20	31,8	2x12	179	113	28	60

**J9 - ORFS Swivel Female 90° Elbow**



XXXXX-XX-XX Part Number	Hose-I.D.				UNF thread	A mm	B mm	E mm	W inch (mm)
	DN	Inch	Size	mm					
1J973-12-12	20	3/4	-12	19,1	1-3/16x12	105	59	48	1-3/8
1J973-12-12-SM	20	3/4	-12	19,1	1-3/16x12	101	53	48	36
1J973-16-12-SM	20	3/4	-12	19,1	1-7/16x12	114	66	56	41
1J973-16-16	25	1	-16	25,4	1-7/16x12	119	70	56	1-5/8
1J973-20-16-SM	25	1	-16	25,4	1-11/16x12	127	77	64	50
1J973-20-20	32	1-1/4	-20	31,8	1-11/16x12	144	81	64	1-7/8
1J973-20-20-SM	32	1.1/4	-20	31,8	1-11/16x12	151	87	69	50
1J973-24-20-SM	32	1-1/4	-20	31,8	2x12	151	87	69	60

**JM - ORFS Male**



XXXXX-XX-XX Part Number	Hose-I.D.				UNF thread	A mm	B mm	W mm
	DN	Inch	Size	mm				
1JM73-16-16-SM	25	1	-16	25,4	1-7/16x12	93	42	41
1JM73-20-16-SM	25	1	-16	25,4	1-11/16x12	89	39	46

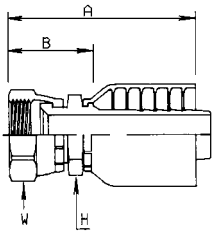
JM fittings are supplied without O-Ring. For fittings with O-Ring please replace JM by J0.  
Fittings with standard O-Ring seals can be used for temperatures from -30 °C up to +105 °C.  
Find O-Rings in section I. Special O-Rings are available on request.

Material: without suffix = zinc plated - yellow chromated mild steel  
SM = Metric Hexagon

Only items priced in current price list are carried in stock.  
Dimensions shown may be changed at any time without prior notice.

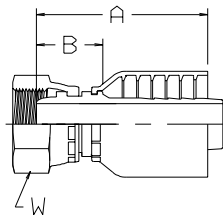
For hose types: 731

**FU - JIS 30° BSPP Swivel Female**



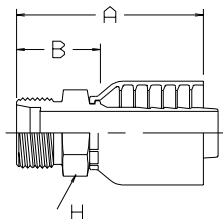
XXXXX-YY-ZZ Part Number	Hose-I.D.				BSP thread	A mm	B mm	H mm	W mm
	DN	Inch	Size	mm					
1FU73-12-12	20	3/4	-12	19,1	3/4x14	80	32	36	36

**F4 - French Swivel Female - Gas Series**



XXXXX-YY-ZZ Part Number	Hose-I.D.				Thread metric	Tube O.D. mm	A mm	B mm	W mm
	DN	Inch	Size	mm					
1F473-27-12	20	3/4	-12	19,0	M36x1,5	27	83	33	46
1F473-33-16	25	1	-16	25,4	M45x1,5	33	84	32	55

**FG - French Male Gas Series**



XXXXX-YY-ZZ Part Number	Hose-I.D.				Thread metric	Tube O.D. mm	A mm	B mm	H mm
	DN	Inch	Size	mm					
1FG73-27-12	20	3/4	-12	19,0	M36x1,5	26,75	82	33	36
1FG73-33-16	25	1	-16	25,4	M45x1,5	33,50	91	39	46

Material: zinc plated - yellow chromated mild steel

Only items priced in current price list are carried in stock.  
Dimensions shown may be changed at any time without prior notice.



Geeve Hydraulics B.V.  
Gouderakstraat 61 3079 DB Rotterdam  
Postbus 9009 3007 AA Rotterdam  
Tel. 010 479 15 11 Fax. 010 479 05 11  
E-mail: [geeve@geeve.com](mailto:geeve@geeve.com)  
Internet: [www.geeve.com](http://www.geeve.com)